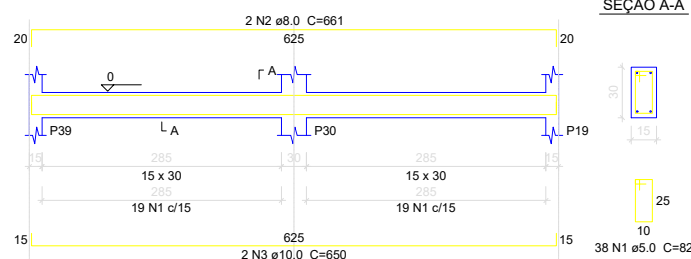
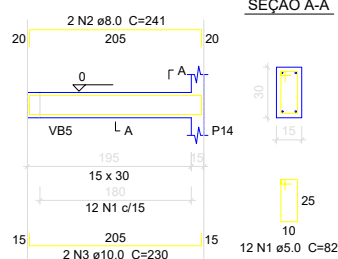


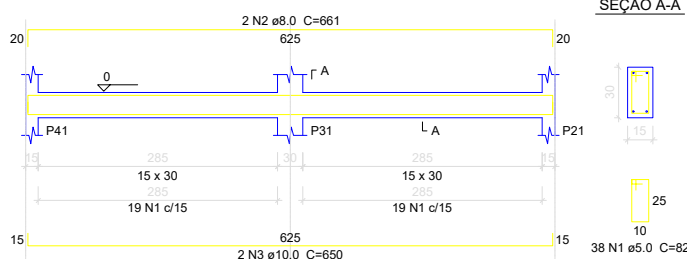
VB10



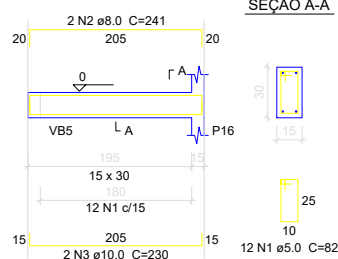
VB11



VB12



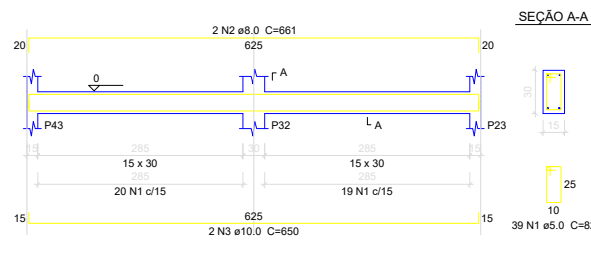
VB13



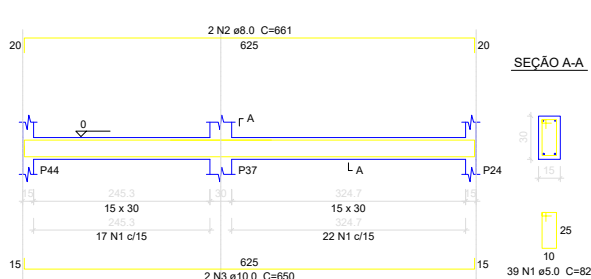
## VIGA BALDRAME

ESC: 1/180

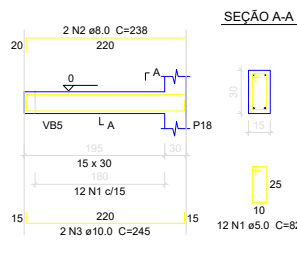
VB14



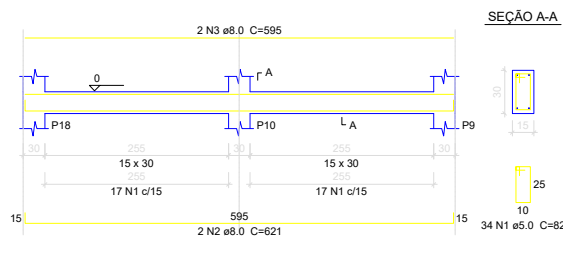
VB15



VB16



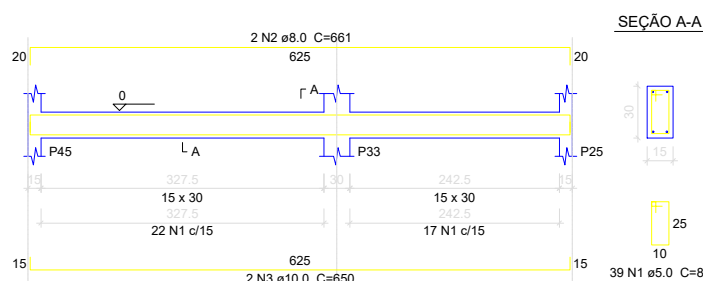
VB17



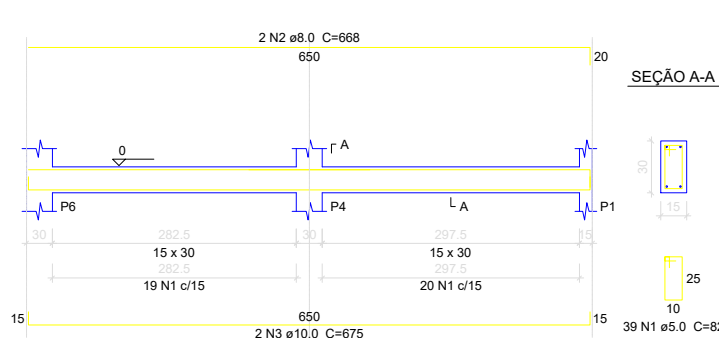
## VIGA BALDRAME

ESC: 1/210

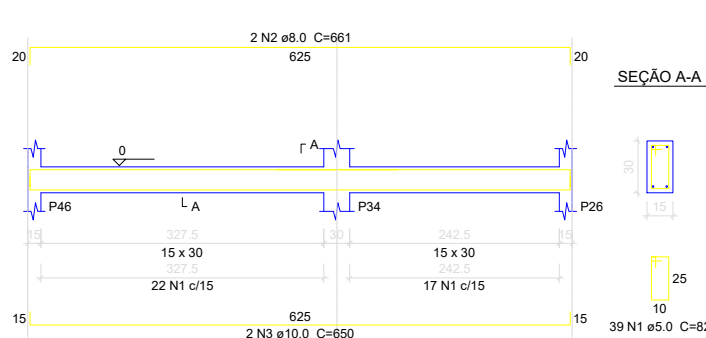
VB18



VB19



VB20



## VIGA BALDRAME

ESC: 1/175

## Relação do aço

ELEMENTO	AÇO	N	DIAM	Q	UNIT (cm)	C.TOTAL (cm)
VB1	CA60	1	5.0	35	82	2870
	CA50	2	8.0	2	607	1214
	CA50	3	10.0	2	614	1228
VB2	CA60	1	5.0	36	82	2952
	CA50	2	8.0	2	625	1250
	CA50	3	10.0	2	614	1228
VB3	CA60	1	5.0	150	82	12300
	CA50	2	8.0	2	812	1624
	CA50	3	8.0	2	1177	2354
VB4	CA50	4	8.0	2	401	802
	CA50	5	8.0	2	1200	2400
	CA50	6	8.0	2	1106	2212
VB5	CA50	7	8.0	2	179	358
	CA60	1	5.0	10	82	820
	CA50	2	8.0	2	201	402
VB6	CA50	3	8.0	2	197	394
	CA60	1	5.0	192	82	15744
	CA50	2	8.0	4	1200	4800
VB7	CA50	3	8.0	2	823	1646
	CA50	4	10.0	2	828	1656
	CA50	5	10.0	2	1137	2274
VB8	CA50	6	10.0	2	1137	2274
	CA60	1	5.0	17	82	1394
	CA50	2	8.0	2	311	622
VB9	CA50	3	10.0	2	300	600
	CA60	1	5.0	10	82	820
	CA50	2	8.0	2	211	422
VB10	CA50	3	10.0	2	200	400
	CA60	1	5.0	201	82	16482
	CA50	2	8.0	2	1198	2396
VB11	CA50	3	8.0	2	1200	2400
	CA50	4	8.0	2	1010	2020
	CA50	5	10.0	2	978	1956
VB12	CA50	6	10.0	2	1135	2270
	CA50	7	10.0	2	1138	2276
	CA60	1	5.0	50	82	4100
VB13	CA50	2	8.0	2	838	1676
	CA50	3	10.0	2	845	1690
	CA60	1	5.0	38	82	3116
VB14	CA50	2	8.0	2	661	1322
	CA50	3	10.0	2	650	1300
	CA60	1	5.0	12	82	984
VB15	CA50	2	8.0	2	241	482
	CA50	3	10.0	2	230	460
	CA60	1	5.0	38	82	3116
VB16	CA50	2	8.0	2	661	1322
	CA50	3	10.0	2	650	1300
	CA60	1	5.0	12	82	984
VB17	CA50	2	8.0	2	241	482
	CA50	3	10.0	2	230	460
	CA60	1	5.0	39	82	3198
VB18	CA50	2	8.0	2	661	1322
	CA50	3	10.0	2	650	1300
	CA60	1	5.0	39	82	3198
VB19	CA50	2	8.0	2	661	1322
	CA50	3	10.0	2	650	1300
	CA60	1	5.0	34	82	2788
VB20	CA50	2	8.0	2	621	1242
	CA50	3	8.0	2	595	1190
	CA60	1	5.0	39	82	3198
VB21	CA50	2	8.0	2	661	1322
	CA50	3	10.0	2	650	1300
	CA60	1	5.0	39	82	3198
VB22	CA50	2	8.0	2	668	1336
	CA50	3	10.0	2	675	1350
	CA60	1	5.0	39	82	3198
VB23	CA50	2	8.0	2	661	1322
	CA50	3	10.0	2	650	1300
	CA60	1	5.0	18	82	1476
VB24	CA50	2	8.0	2	323	646
	CA50	3	10.0	2	330	660
	CA60	1	5.0	96	82	7872
VB25	CA50	2	8.0	2	1200	2400
	CA50	3	8.0	2	432	864
	CA50	4	10.0	2	1101	2202
VB26	CA50	5	10.0	2	473	946
	CA60	1	5.0	38	82	3116
	CA50	2	8.0	2	650	1300
	CA50	3	10.0	2	675	1350

## Resumo do aço

AÇO	DIAM	C.TOTAL (m)	PESO (kg)
CA50	8.0	473.5	186.8
CA50	10.0	335.7	207
CA60	5.0	979.1	150.9
PESO TOTAL			
CA50	393.8		
CA60	150.9		

Vol. de concreto total (C-25) = 8.82 m³  
Área de forma total = 147 m²



**PREFEITURA MUNICIPAL DE VÁRZEA GRANDE**  
Av. Castelo Branco, Espaço Municipal, 2500 - Centro Sul, Várzea Grande/MT  
CEP 78125-700 - Fone/Fax: 65 3688 8000

**LOCALIZAÇÃO:**  
AVENIDA PRINCIPAL, DISTRITO DA PASSAGEM DA CONCEIÇÃO  
VÁRZEA GRANDE - MT

**PROJETO:**  
PROJETO ESTRUTURAL

**OBRA:**  
REFORMA E AMPLIAÇÃO DA  
EMEB DR. JOÃO PONCE DE ARRUDA

**DATA:**  
AGOSTO/2022

**UNIDADE:**  
METRO

**AUTOR DO PROJETO:**  
GUILHERME SIMPLÍCIO DIAS  
ENGENHEIRO CIVIL CREA - MT 36575

**ÁREAS:**  
-ÁREA DO TERRENO: 1.651,58m²  
- ÁREA CONS. EXIS: 380,13m²  
-ÁREA DE DEMOLIÇÃO: 178,957m²  
-ÁREA DE AMPLIAÇÃO:370,00m²  
- ÁREA CONSTRUÍDA FINAL: 571,18m²

FOLHA Nº:

08/13